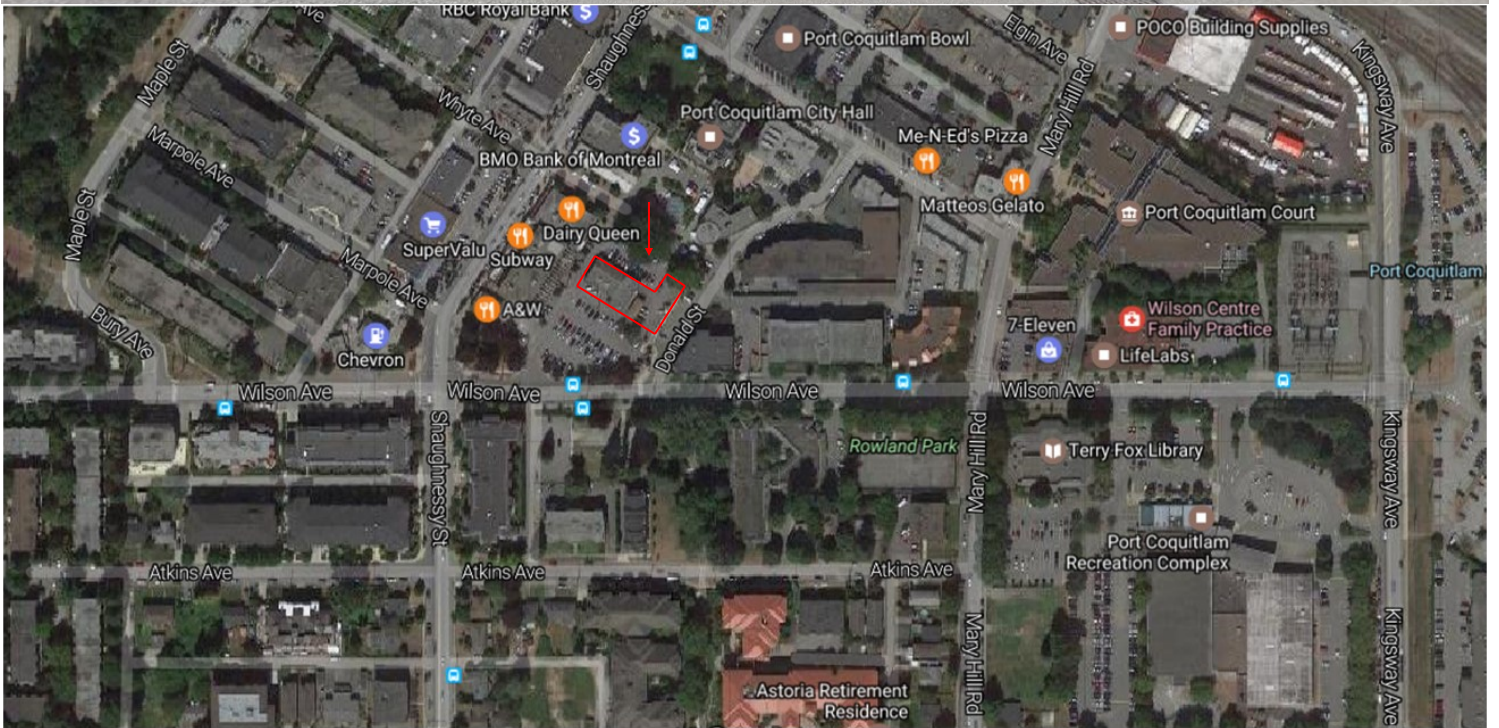


FOR LEASE

2272 Leigh Square, Port Coquitlam



BRING YOUR IDEAS!! This stand alone building is located in the heart of downtown Port Coquitlam and offers approx 19 parking stalls. Previously the Elks Hall, this building is equipped with washrooms, kitchens, large open areas for entertaining and more. Call today,



FOR INFORMATION AND VIEWING CALL:
Bobbi Crandall | Macdonald Realty Ltd. | 604-931-5551
www.tullisrealty.com | cbobbi@telus.net

E&O: Although this information has been received from sources deemed to be reliable, we assume no responsibility for it's accuracy, and without offering advice, make this submission to prior lease or sale, change in price or terms and withdrawal without notice.

FOR LEASE

2272 Leigh Square, Port Coquitlam

LOCATION

Located in Central Port Coquitlam adjacent to Leigh Square community area and in the centre of the downtown core.

OPPORTUNITY

4,982 stand alone building offers ample plumbing, offices, open area, full kitchen with appliances, kitchenettes and 3 washrooms with multiple stalls. Approximately 19 reserved parking stalls.

Total Size 4,982 sq ft

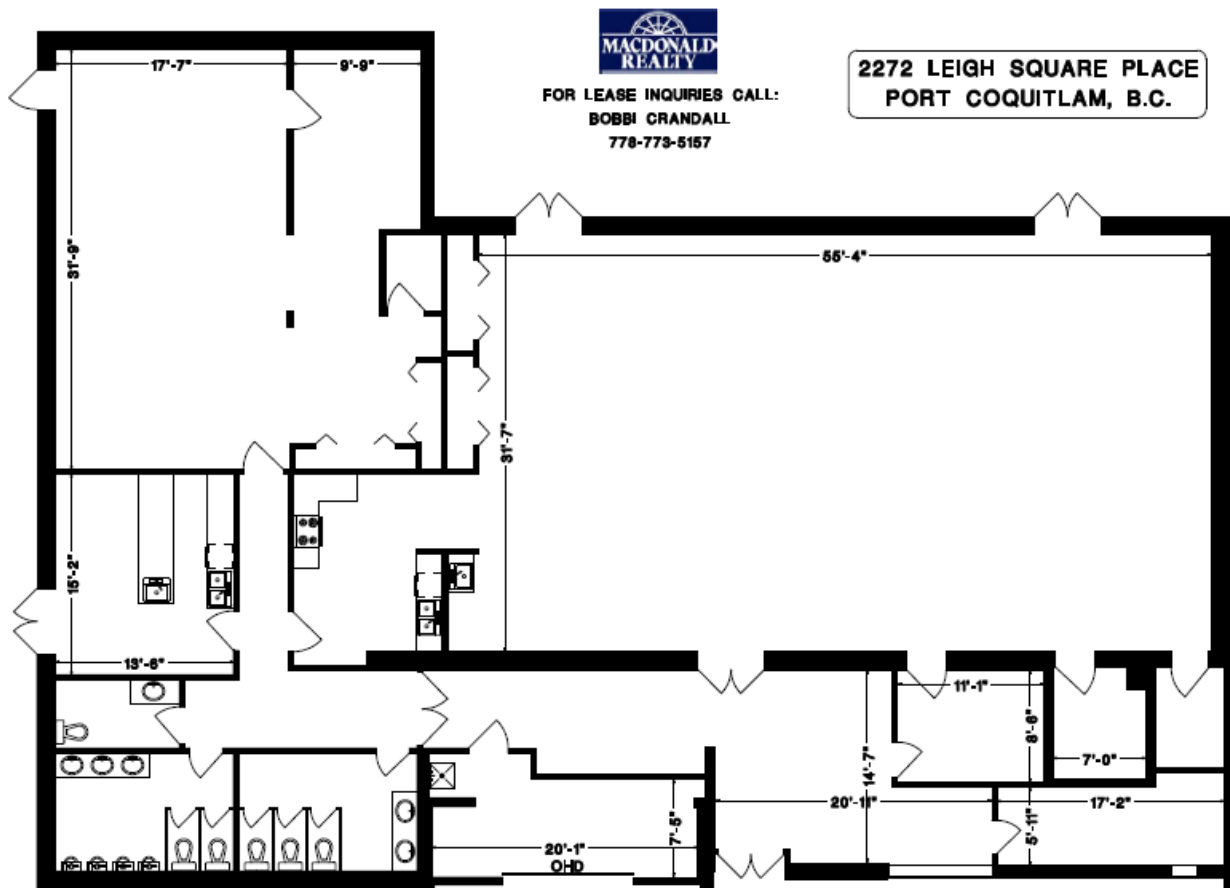
Base Rent: \$12.00psf

Op Cost: \$10.00 psf

Monthly Rent \$9,133.67

Zoning: CC Community Commercial*

**Call listing agent for details. Ample Uses allowed*



FOR INFORMATION AND VIEWING CALL:

Bobbi Crandall | Macdonald Realty Ltd. | 604-931-5551

www.tullisrealty.com | cbobbi@telus.net

E&O: Although this information has been received from sources deemed to be reliable, we assume no responsibility for it's accuracy, and without offering advice, make this submission to prior lease or sale, change in price or terms and withdrawal without notice.