



FOR SUBLEASE

200 - 1024 Ridgeway Avenue, Coquitlam



For more information, please contact

Derek Tullis 604.931.5551

Personal Real Estate Corporation

E derek@tullisrealty.com

W tullisrealty.com



E& O.E. this communication is not intended to cause or induce breach of an existing agency agreement. Although this information has been received from sources deemed reliable, we assume no responsibility for its accuracy and without offering advise, make this submission to prior sale or lease, change in price or terms, and withdrawal without notice.

FOR SUBLEASE

Executive Summary

OPPORTUNITY

Opportunity to sublease 2,664 SF of Second floor Office space with Elevator access along Austin Heights. This unit consists of reception area, 9 offices, sink, one washroom within the unit along with common washrooms down the hall.

LOCATION

The subject property is located in Central Coquitlam in the Austin Heights corridor at the corner of Nelson Street between Austin Avenue and Ridgeway Avenue. Located adjacent to the brand new Beedie development which is home to the new Safeway and 2 brand new residential towers. Austin Avenue is a central bus route which will take you directly to the Lougheed Skytrain Station.

PROPERTY DETAILS

LEASABLE AREA:

2,664 sq ft

TERM:

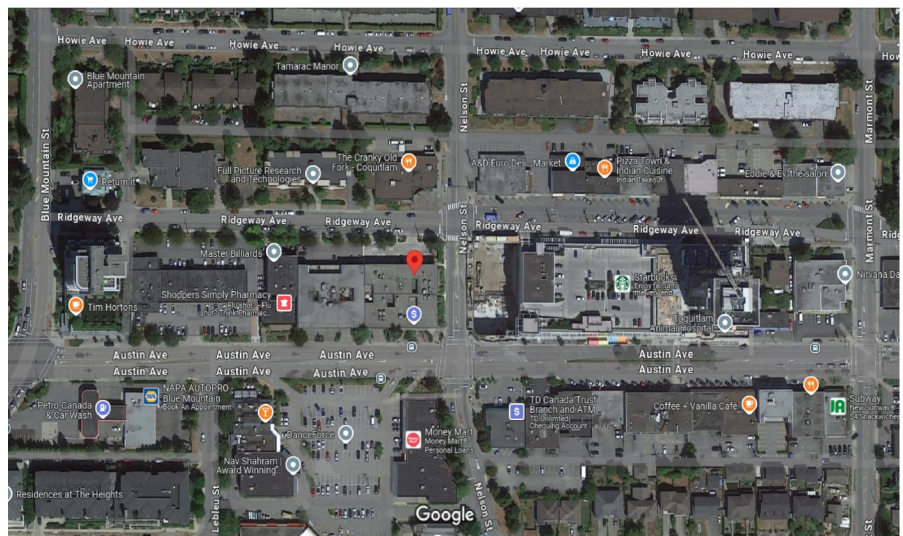
Sublease Term until January 14, 2026

RENT:

Please contact listing agent for Lease rates

ZONING:

C2 (contact Listing Agent for details)

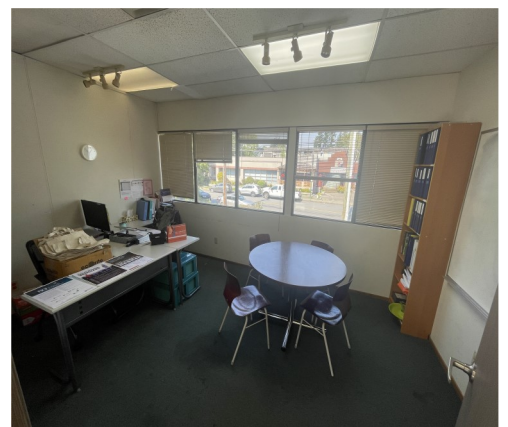
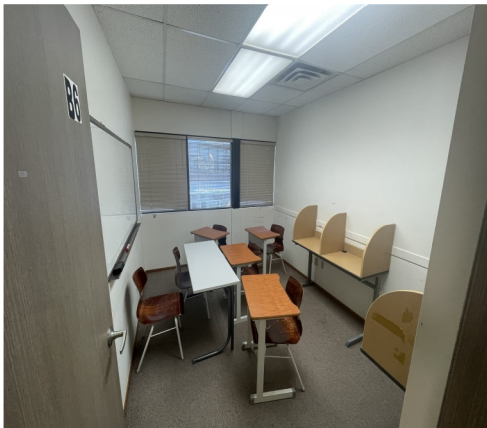


For more information, please contact

Derek Tullis 604.931.5551
Personal Real Estate Corporation
E derek@tullisrealty.com
W tullisrealty.com



FOR SUBLEASE



For more information, please contact

Derek Tullis 604.931.5551

Personal Real Estate Corporation

E derek@tullisrealty.com

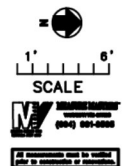
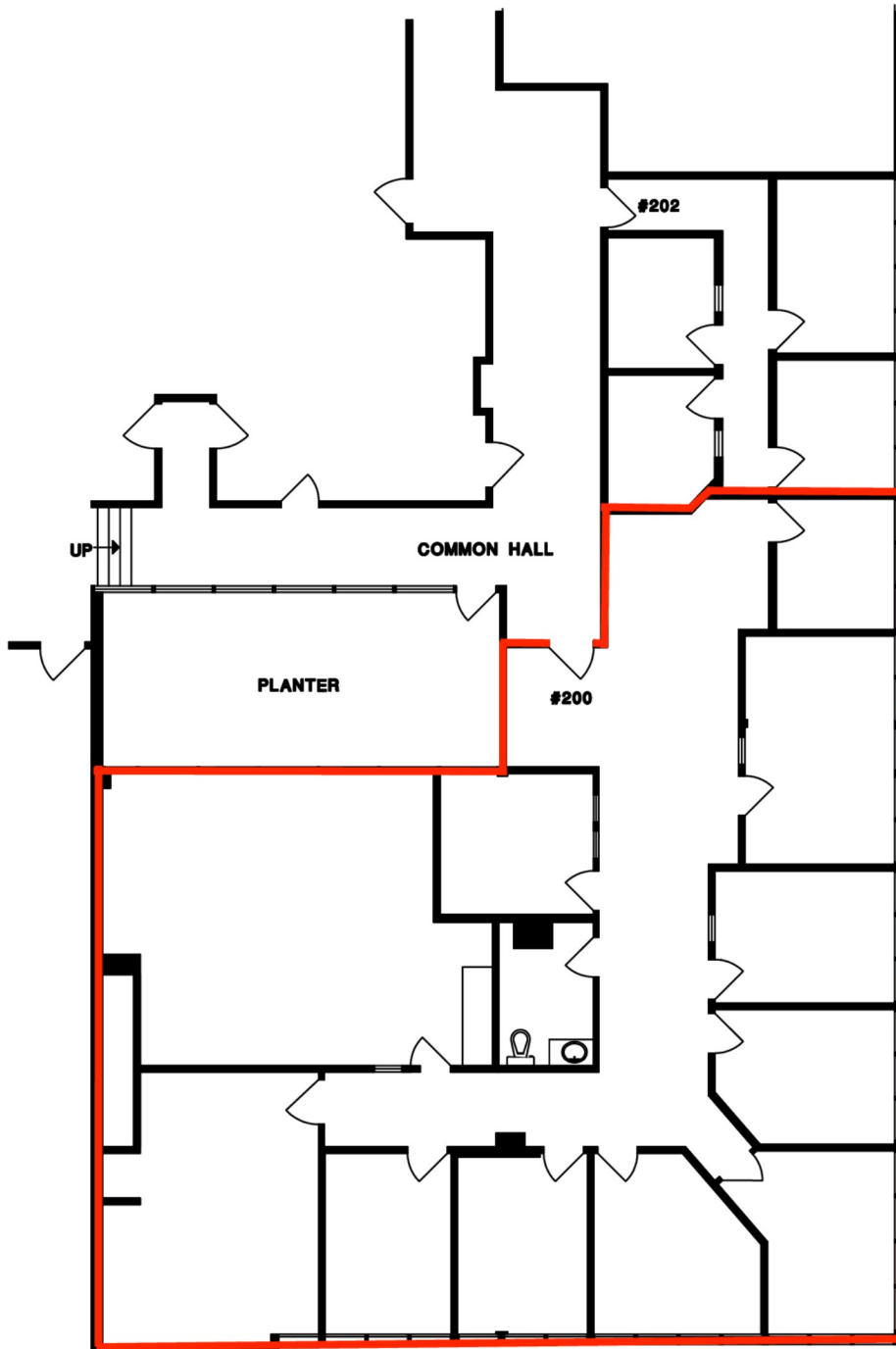
W tullisrealty.com



FOR SUBLEASE

1024 RIDGEWAY AVE.,
COQUITLAM, B.C.

2ND FLOOR



For more information, please contact

Derek Tullis 604.931.5551

Personal Real Estate Corporation

E derek@tullisrealty.com

W tullisrealty.com

