

FOR LEASE

1a-555 Clarke Road, Coquitlam



FOR INFORMATION AND VIEWING CALL:
Bobbi Crandall | Macdonald Realty Ltd. | 604-931-5551
www.tullisrealty.com | cbobbi@telus.net

E&O: Although this information has been received from sources deemed to be reliable, we assume no responsibility for it's accuracy, and without offering advice, make this submission to prior lease or sale, change in price or terms and withdrawal without notice.

FOR LEASE

1a-555 Clarke Road, Coquitlam

LOCATION

Join many other retailers and service providers in this centrally located building which is directly across the street from the new Burquitlam Skytrain set to tentatively open by the end of 2016. This building gives you ample exposure with fascia & pylon signage available.

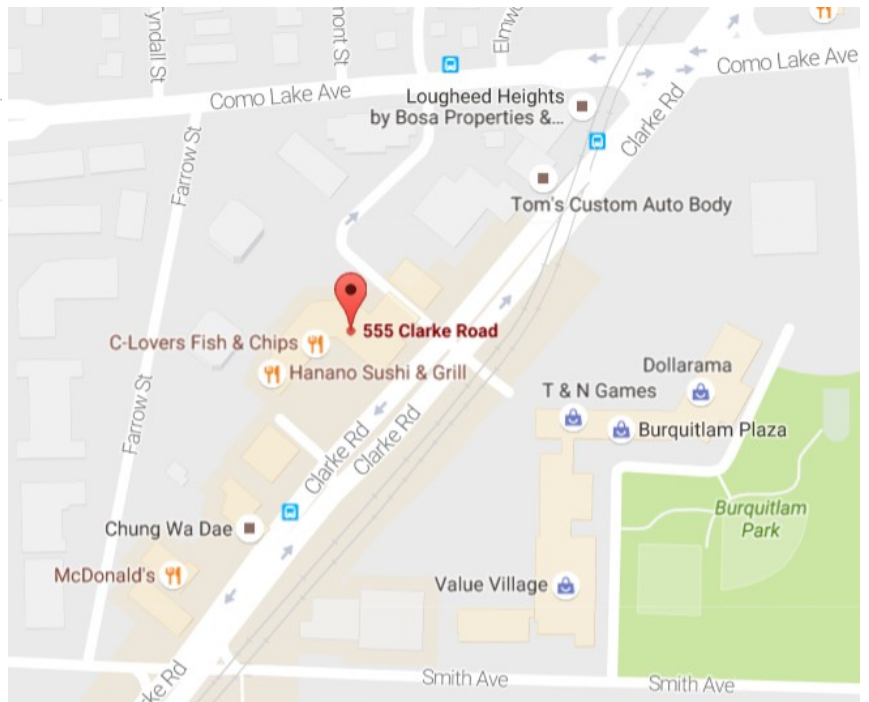
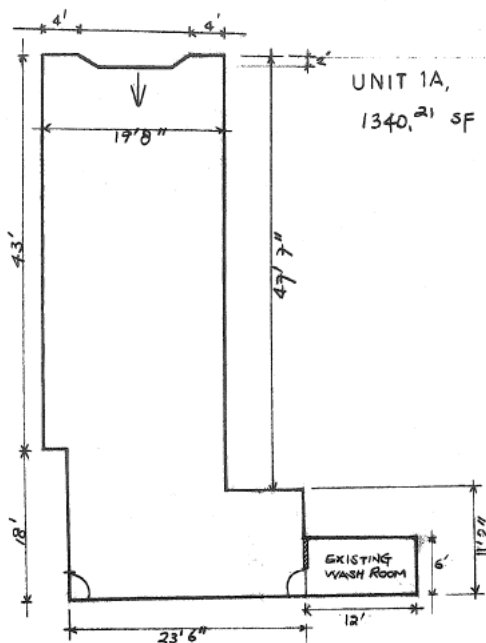
OPPORTUNITY

1,340 sqft unit offers open area retail and washroom in the rear of the space.

Unit 1a

1,340 sq ft
Base Rent: \$25.00psf
Mgmt Fee: 5% Base Rent
Op Cost: \$15.40psf

Zoning: C2 Community Commercial



FOR INFORMATION AND VIEWING CALL:
Bobbi Crandall | Macdonald Realty Ltd. | 604-931-5551
www.tullisrealty.com | cbobbi@telus.net

E&O: Although this information has been received from sources deemed to be reliable, we assume no responsibility for its accuracy, and without offering advice, make this submission to prior lease or sale, change in price or terms and withdrawal without notice.