



For Lease



RETAIL SPACE Port Coquitlam (Located inside of Shaughnessy Mall)

116-2540 Shaughnessy Street, Port Coquitlam
750 sq ft

For more information, please contact

Bobbi Crandall 778.773.5157

REALTOR®

E cbobbi@telus.net

W tullisrealty.com



This communication is not intended to cause or induce breach of an existing agency agreement. Although this information has been received from sources deemed reliable, we assume no responsibility for its accuracy and without offering advice, make this submission to prior sale or lease, change in price or terms, and withdrawal without notice.

Executive Summary

LOCATION

Located in the heart of downtown Port Coquitlam on Shaughnessy Street, this unit is on a transit route and blocks from the Westcoast Express. Great opportunity. Located near trails, parks and the downtown core, just a block from City Hall.

OPPORTUNITY

This retail unit is 750 sqft and is located inside of Shaughnessy Mall. Open floorplan and 1 washroom.

Base Rate \$20.00 psf per annum

Op Cost Rate \$12.00 psf per annum

Total Rent \$2,000.00 + GST per month

AVAILABLE November 2021

Bobbi Crandall 778.773.5157

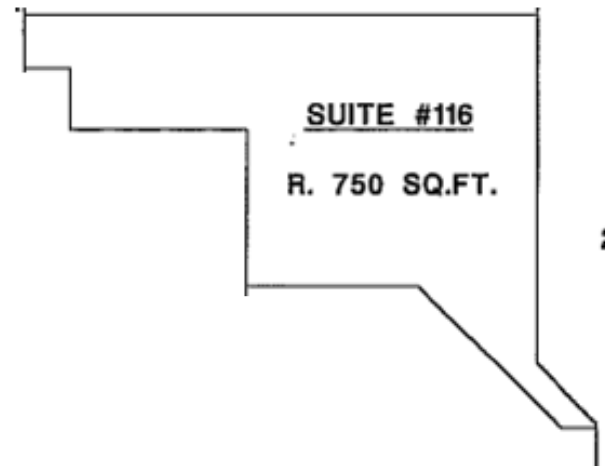
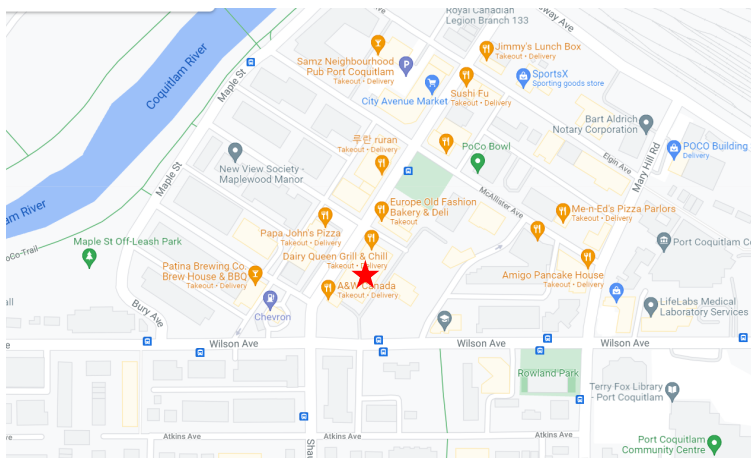
REALTOR®

E cbobbi@telus.net

W tullisrealty.com

ZONING

CC Community Commercial—Ask Agent for further details



For more information, please contact

Bobbi Crandall 778.773.5157

REALTOR®

E cbobbi@telus.net

W tullisrealty.com

