

FOR LEASE

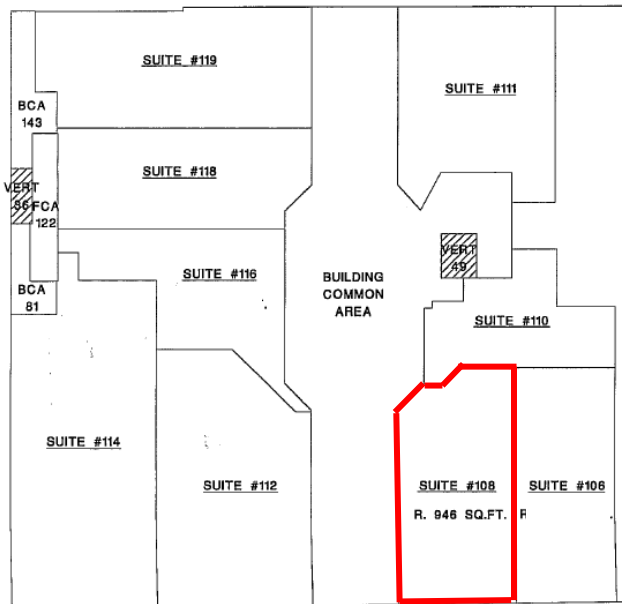
108-2540 Shaughnessy Street, Port Coquitlam



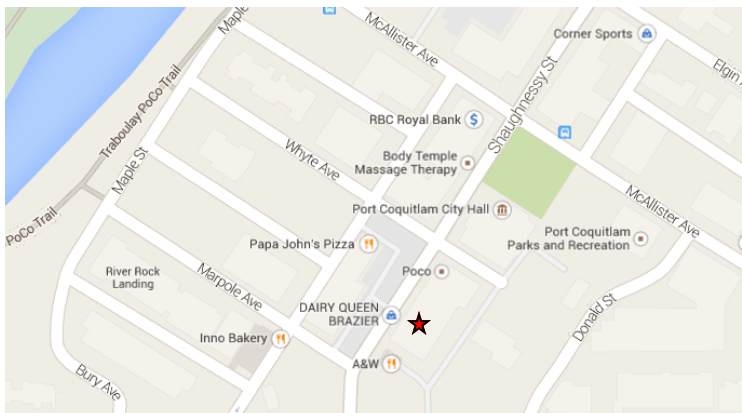
946 Sq ft retail available on Shaughnessy Street . Parking in front and rear of building. Centrally located building in the downtown Port Coquitlam with ample walking traffic & dozens of local business nearby, including City Hall.

Base Rent \$24.00psf \$1,892.00
Op Cost \$10.50 \$ 827.75
Monthly Rent \$2,719.75 plus GST

Zoning: CC Community Commercial
 Contact Listing Agent for more info on allowed uses



Shaughnessy Street



FOR INFORMATION AND VIEWING CALL:
 Bobbi Crandall | Macdonald Realty Ltd. | 604-931-5551
 www.tullisrealty.com | cbobbi@telus.net

E&O: Although this information has been received from sources deemed to be reliable, we assume no responsibility for it's accuracy, and without offering advice, make this submission to prior lease or sale, change in price or terms and withdrawal without notice.