



2572 Davies Avenue, Port Coquitlam

\$4,950,000

17,545 SQFT LOT

12,655 SQFT BUILDING

For more information, please contact:

Wayne Tullis 604.868.5388

REALTOR®

E wayne@tullisrealty.com

W tullisrealty.com

Executive Summary

DETAILS

- 8603 sf main floor area which is split 3125 sf office and 5478 sf Warehouse
- 4052 sf 2nd floor office
- 12,655 sf total building size
- Approx. 12 onsite parking stalls
- Fully renovated building in 2007
- High Quality office finishing's
- 3 Dock level bay doors off lane
- 1 Grade level bay door at front
- Vacant possession available

PID

002-249-316

LEGAL DESCRIPTION

LOT 105, DL 379, GRP 1, NWD 59040

TAXES (2021)

\$44,665.00

ZONING

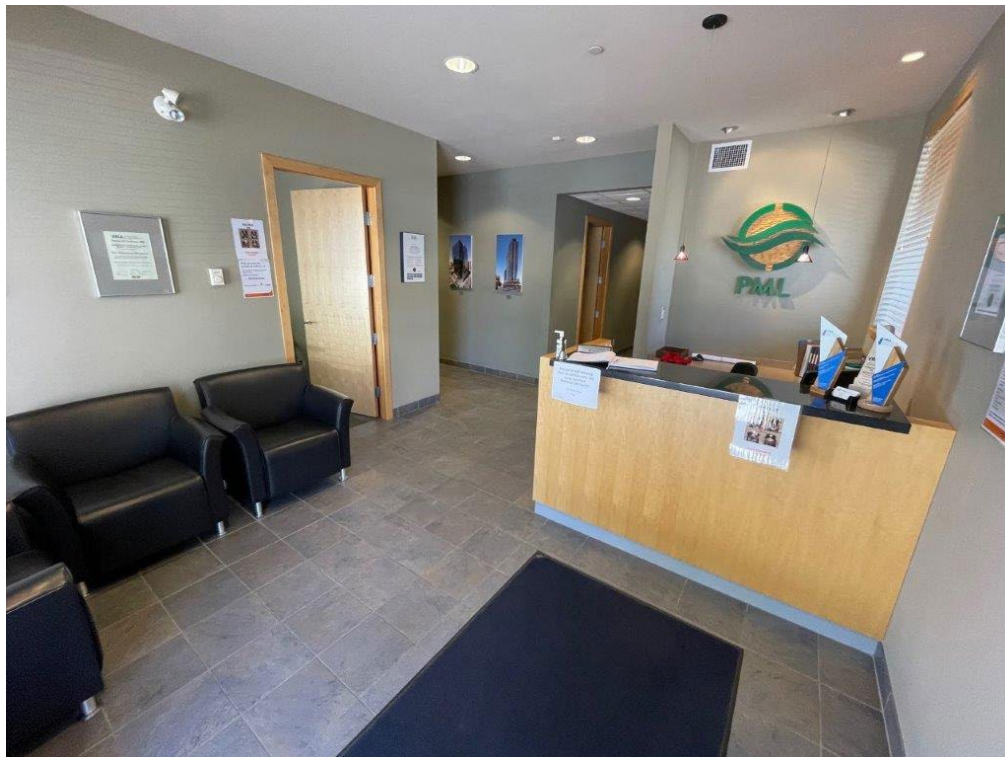
M-3 Light Industrial

LOT SIZE

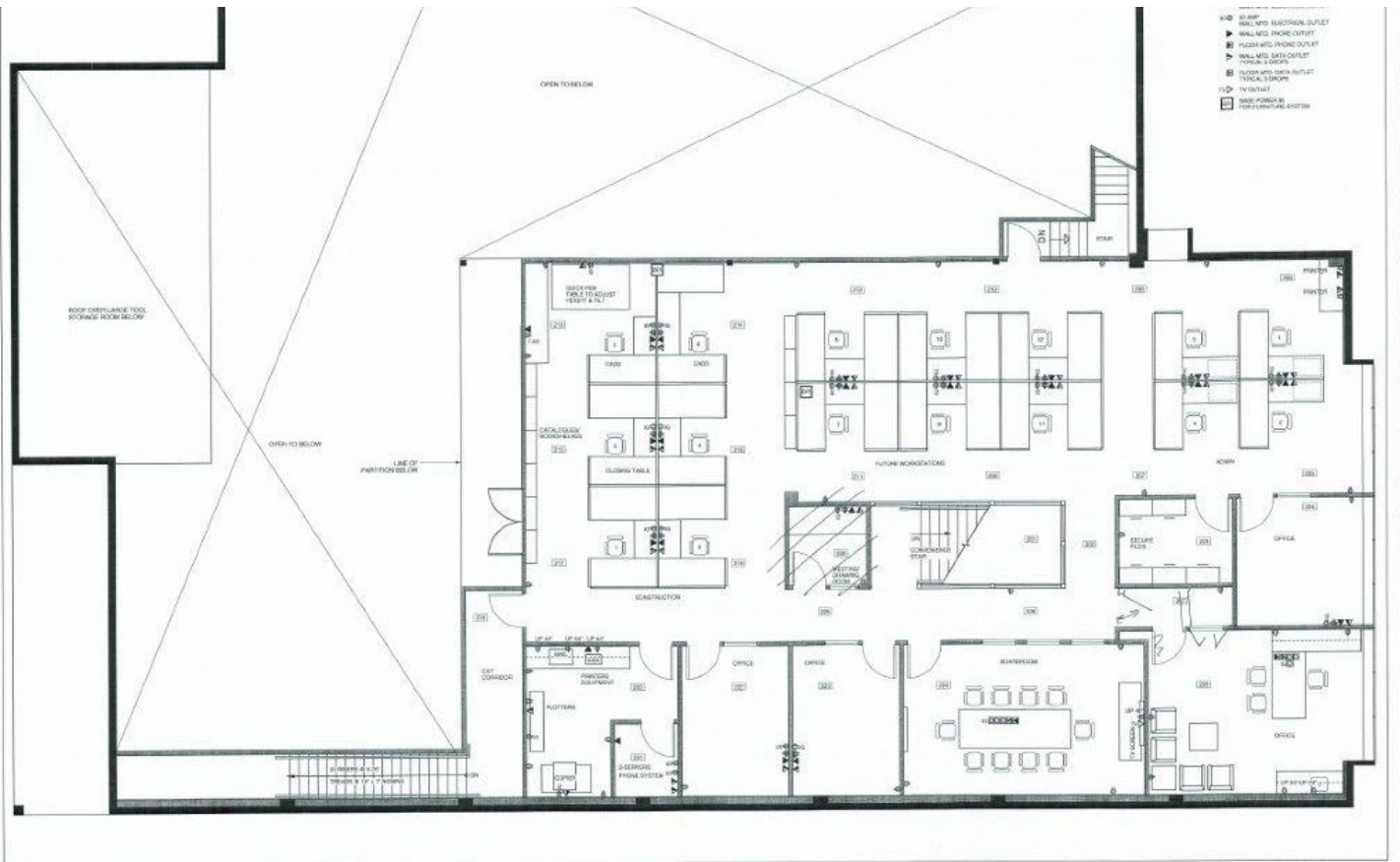
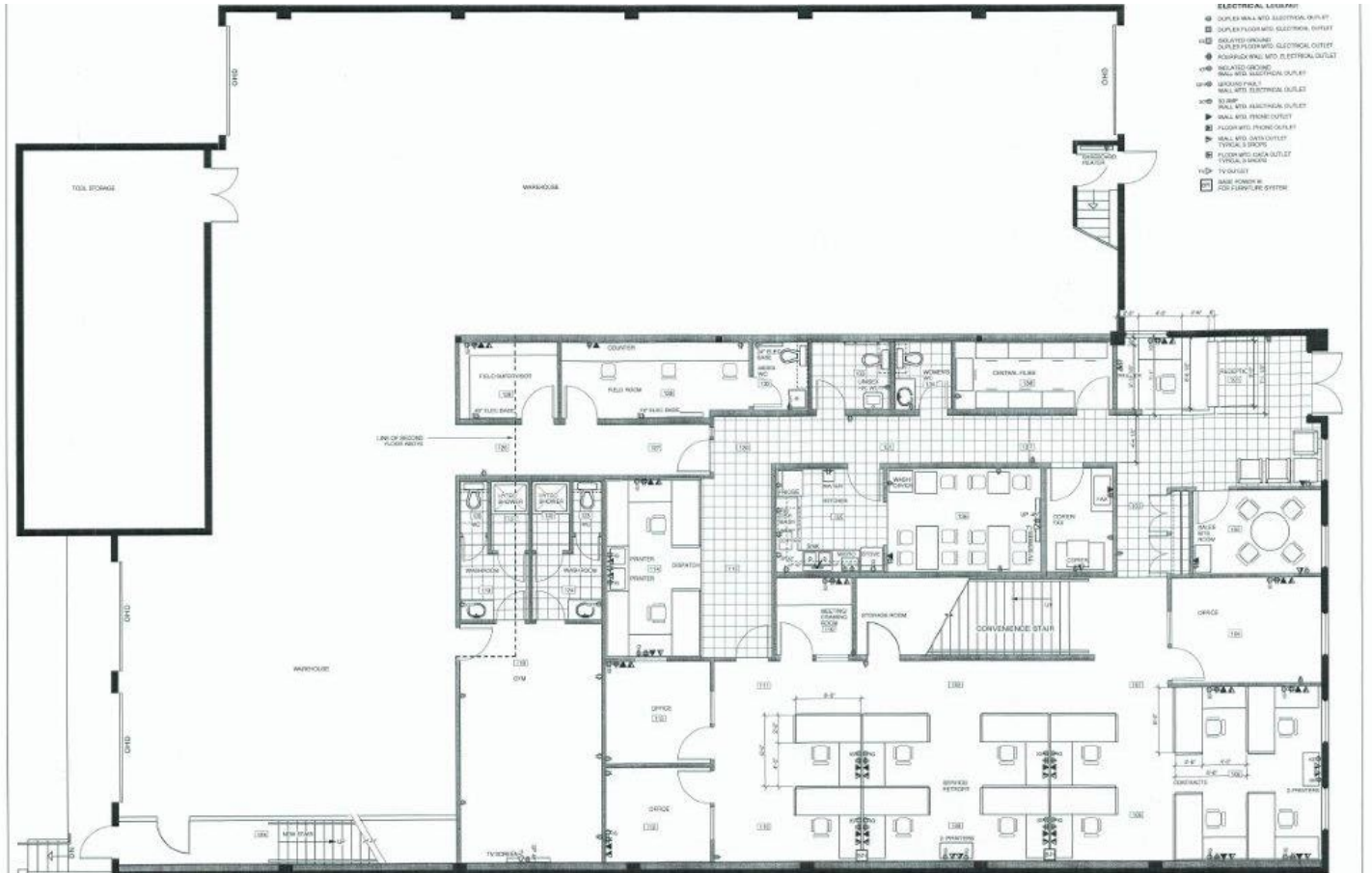
17,545 Square Feet

LIST PRICE

\$4,950,000



Executive Summary



Executive Summary

