



FOR LEASE OFFICE



Second Floor Office Space

205-1062 Austin Avenue, Coquitlam

594 sq ft

For more information, please contact

Bobbi Crandall 778.773.5157

Personal Real Estate Corporation | REALTOR®

E cbobbi@telus.net

W tullisrealty.com



This communication is not intended to cause or induce breach of an existing agency agreement. Although this information has been received from sources deemed reliable, we assume no responsibility for its accuracy and without offering advice, make this submission to prior sale or lease, change in price or terms, and withdrawal without notice.

Executive Summary

LOCATION

Located in central Coquitlam in the Austin Heights corridor. This building offers both retail and professional office space and is a block away from the new Beedie development which is home to the new Safeway and soon to be 2 brand new residential towers. Austin Avenue is a central bus route which will take you directly to the Lougheed Skytrain Station. Building offers underground parking.

OPPORTUNITY

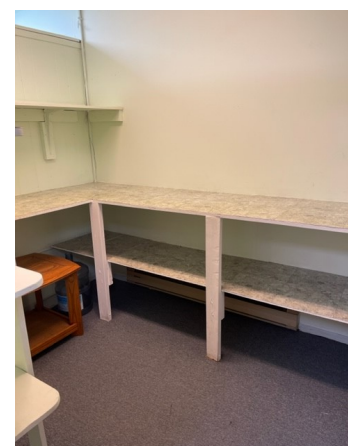
Second floor office space (walk up, no elevator) with 2 offices, reception and storage room.

RENT

Base Rate \$16.00 psf per annum
Op Cost Rate \$12.00 psf per annum
Total Rent \$1,253.00 + GST per month

ZONING C2

This zone provides for appropriate land either within or abutting residential areas for the retailing of goods to satisfy the daily household or personal needs of the occupants of those residential areas .



Bobbi Crandall 778.773.5157

Personal Real Estate Corporation | REALTOR®

E cbobbi@telus.net

W tullisrealty.com

