

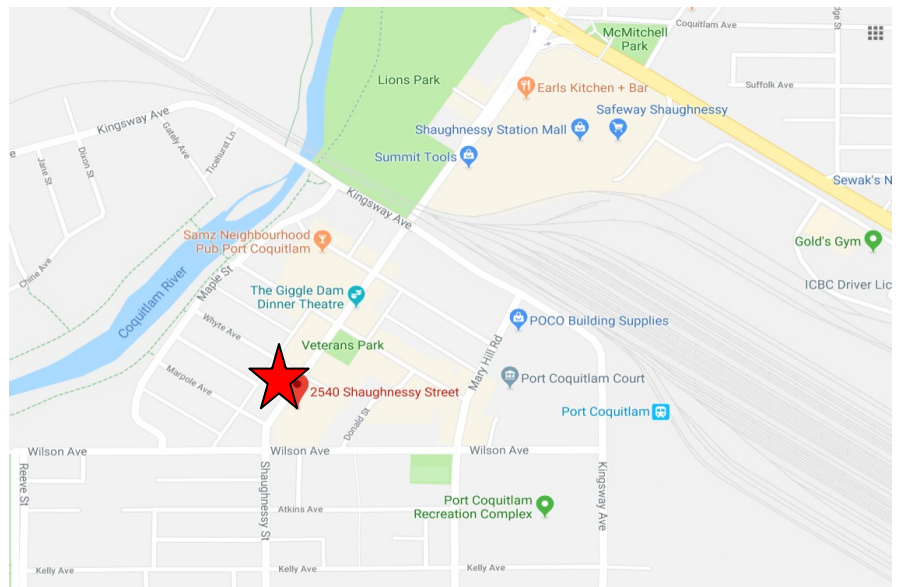
# FOR LEASE

200-2540 Shaughnessy Street, Port Coquitlam

3444 Sq ft Built out  
Office Space



Office space totaling 3,444 sq ft in the heart of busy downtown Port Coquitlam. Second floor unit with both stairs and elevator access.

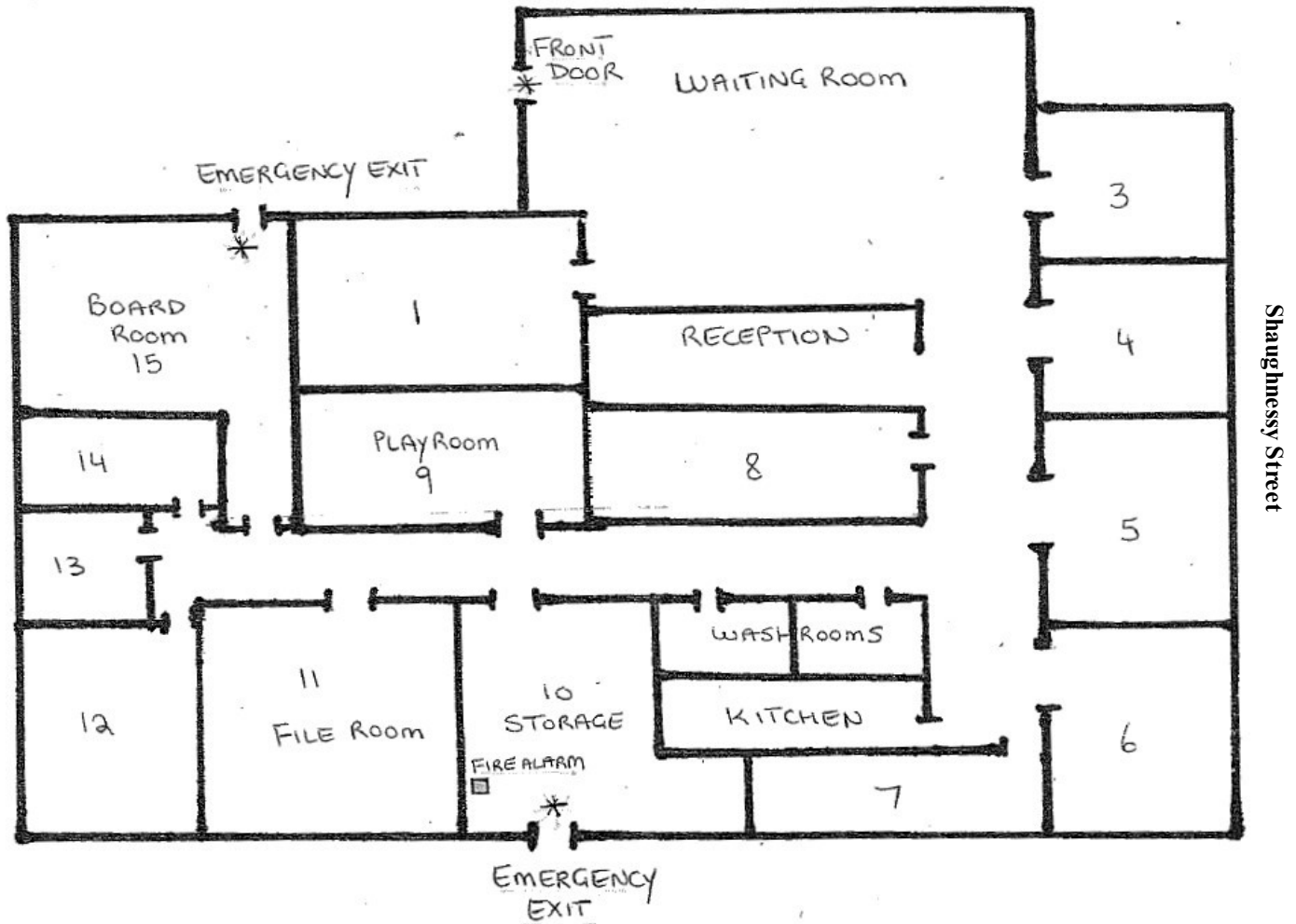


FOR INFORMATION AND VIEWING CALL:  
Bobbi Crandall | Macdonald Realty Ltd. | 604-931-5551  
www.tullisrealty.com | cbobbi@telus.net

E&O: Although this information has been received from sources deemed to be reliable, we assume no responsibility for its accuracy, and without offering advice, make this submission to prior lease or sale, change in price or terms and withdrawal without notice.

# FOR LEASE

200-2540 Shaughnessy Street, Port Coquitlam



**Base Rent** \$10.00psf      \$ 2,870.00  
**Op Cost** \$9.50psf      \$ 2,726.50  
**Monthly Rent**      \$ 5,596.50 plus GST

**Zoning:**  
**CC Community Commercial**



**FOR INFORMATION AND VIEWING CALL:**  
**Bobbi Crandall | Macdonald Realty Ltd. | 604-931-5551**  
[www.tullisrealty.com](http://www.tullisrealty.com) | [cbobbi@telus.net](mailto:cbobbi@telus.net)

E&O: Although this information has been received from sources deemed to be reliable, we assume no responsibility for its accuracy, and without offering advice, make this submission to prior lease or sale, change in price or terms and withdrawal without notice.